



# WHITE CRYSTAL 204

**1 bedroom, 1 bathroom, 4 SHARE**  
**1 king split bed, 1 double sofa bed**  
**1 spa bath, 1 shower, 2 toilets**

White Crystal apartments are centrally located in the Hotham Central building opposite the day carpark. These luxurious fully self contained apartments offer views over Swindlers Valley ski area or the Summit / Great Alpine Road. The property offers direct ski in – ski out access and is adjacent to the Village Chairlift. Within the Hotham Central building is: restaurants, bars/bistro, cafes, ski/board/clothing hire, tickets department, retail stores, supermarket, massage and beauty centre and accommodation reception desk.

Each apartment comes fully equipped with its own corner spa bath, full kitchen and a private ski locker located on the ground floor. Overnight parking is available in the designated bays alongside the Great Alpine Rd starting 1.8kms from Hotham Central. The free Village shuttle buses run each day of the ski season from the car parks and throughout the village.

White Crystal 204 is a 2 storey apartment situated on the second accommodation level of the Hotham Central building with views to the Summit Run. The apartment opens into a short hall which has a drying cupboard.

## **Laundry**

- Washing Machine
- Dryer
- Trough

## **Bathroom**

- Shower over 2/3 Person Spa
- Hand Basin & Toilet
- Hairdryer

## **Kitchen/Dining**

- Stainless Steel Electric Oven
- Stainless Steel Electric Stove
- Microwave
- Medium Size Fridge
- Dishwasher
- Dining for 4

## **Living**

- 1 x Double Sofa Bed
- 1 x Double Sofa
- TV - DVD

## **Bedroom**

- 1 x King Split Bed
- Wardrobe
- Bedside Lamps

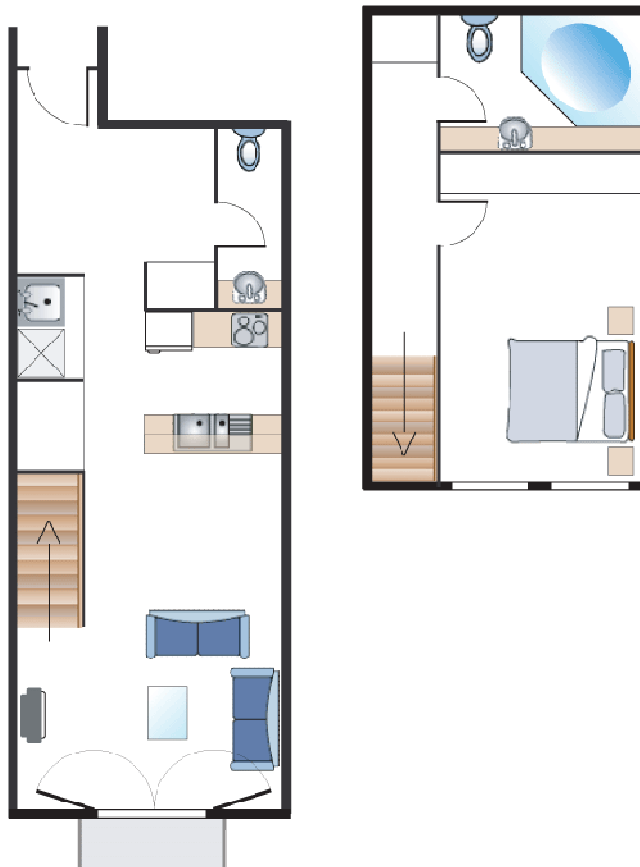
***White Crystal Apartments have electric wall panel heating throughout.***



Accurate as of 1<sup>st</sup> July 2010. Subject to change without notice.



Accurate as of 1<sup>st</sup> July 2010. Subject to change without notice.



Accurate as of 1<sup>st</sup> July 2010. Subject to change without notice.