

TONGIO

**2 bedroom, 1 loft, 2 bathroom, 10 SHARE
1 queen, 2 bunks, 2 singles, 1 king trundle
1 bath, 2 showers, 2 toilets**

Dinner Plain is a fairytale alpine village located just 10 km along the Great Alpine Road on the Omeo side of Hotham and 10 km from the Hotham Airport. The village has over 200 beautiful alpine chalets and apartments set amongst the snow gums and features its' own ski run. Dinner Plain truly is a 'Winter Wonderland' being at an elevation of over 1500 meters above sea level.

All within easy walking distance are five restaurants, a popular pub, café/supermarket, a retail shop and the new DP Central and Onsen Spa. This new complex includes a hairdresser, restaurant, conference facilities, a reception and four main components within the Onsen Spa itself: Japanese inspired Onsen spa, lap pool, day spa and gymnasium open all year round. Cross-country skiing trails surround the village and guided walking or mountain biking are also available all year. Park your car at the door of your chalet and unwind into the leisurely and relaxed way of life at Dinner Plain.

Tongio is a 2 storey chalet with a loft located in Drybone Lane. This property has space for at least 2 cars in the driveway. Within a short stroll are restaurants, the Dinner Plain Pub, the Dinner Plain Ski Slope, Brandy Creek Café/Supermarket, and Dinner Plain Central and Onsen Spa.

Entry

• Ski rack	• Drying room
------------	---------------

Laundry

• Washing machine	• Dryer	• Trough
-------------------	---------	----------

Bathroom 1

• Shower over bath	• Ceiling fan/light/heating	• Separate toilet
--------------------	-----------------------------	-------------------

Kitchen/Dining

• Electric oven	• Electric stove	• Microwave
• Large Fridge	• Dishwasher	• Long kitchen bench with 2 stools
• Dining for 8		

Living

• Wood combustion fireplace	• 2 x Armchair	• 3 x Double sofa
• 1 x L shaped window seat	• TV/VCR/DVD Player	• CD Stereo

Bedroom 1 – Upstairs

• 1 x Queen	• Built in robe	• Chest of Drawers
• Television	• Clock Radio	

Bedroom 2 – Upstairs

• 2 x Bunk	• Bedside lamps	• Flat screen TV
------------	-----------------	------------------

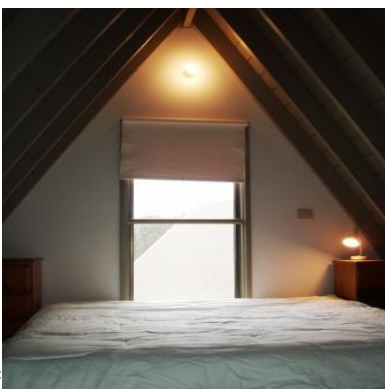
Bathroom 2 – Upstairs

• Shower	• Hairdryer	• Separate Toilet
----------	-------------	-------------------

Loft Bedroom – Accessed via spiral staircase from level 2

• 1 x King trundle	• 2 x Single	• CD Stereo
--------------------	--------------	-------------

Accurate as of 1st Oct 2008. Subject to change without notice.



Acc...ct to ch